



We know your challenges in implementing Cisco UCM, and we have addressed them in IP-TAS. Time consuming preparations, configurations and complex operations can be done in less than 50% of the time you spend today.

Automation:

You will never want to go back to your manual methods

Value throughout the entire UC-lifecycle:

- **Prepare**
 - Automated migrations from Legacy PBX to CUCM. Reuse existing information as foundation for your new UCM environment. Simple process allows you to perform migrations of thousands of users within minutes.
 - Use an existing LDAP source to build your cluster user data, regardless if it's going to be LDAP synchronized or not, IP-TAS can use LDAP information to start building at any time, in off-line mode.
- **Plan**
 - The Off-Line capability makes it easy to predict the remaining efforts. Predictability is one of the most important inputs to planning.
 - Everyone involved in the project can be given access to the cluster to have full insight, and have insight/control of when phases will be ready to deploy.
- **Design**
 - Simplify your system settings design by using templates, or reuse of best practice clusters. New clusters or sites can be instantiated within seconds, containing Route Plan, Redundancy, and Class of Service etc. Multiple engineers can follow design configuration off-line to validate before deploying.
- **Deploy**
 - Regardless of what rollout method you are using IP-TAS will help you to be fast and accurate in your deployment. Features like "Label-Printing at MAC address scanning", "Extension Mobility wizard", "Self Activation" add value in most deployment scenarios.
- **Operate**
 - The GUI is optimized to find and change data of any entity (e.g. Phone, DN, User ...) quickly and consistent. Wizards available for many time consuming tasks. Templates available for most entities.
- **Optimize**
 - Upgrade to new versions of Cisco UCM using the "Version Leap" feature.
 - New features/sites can be added off-line and provisioned when convenient. Wizards make it easy to enable new features for users.

Together with Visionael's Systems Orchestrator you can automate almost any process reaching other systems such as Presence Server, Meeting Place, OCS, etc. based on the content of Users, phones, DN's in IP-TAS. Self-Activation is an example of IP-TAS / Systems Orchestrator integration.



*Cisco UCM
Version Leap from
Windows to Linux
in just a few clicks*

*Migrate thousands
of phones from
Legacy PBX to
Cisco UCM in a few
minutes*

*Secure Self
Activation of
phones without
IVR and auto
registration*

*Off-line capability

No hardware
requirement to
start configure the
cluster*

*Rapid deployments
using templates,
wizards, bulk
editing and
simplified
provisioning*

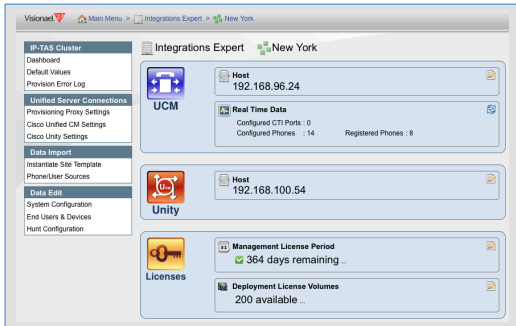
IP Telephony Automation Solution (IP-TAS)

Rapid and predictable Cisco UCM projects

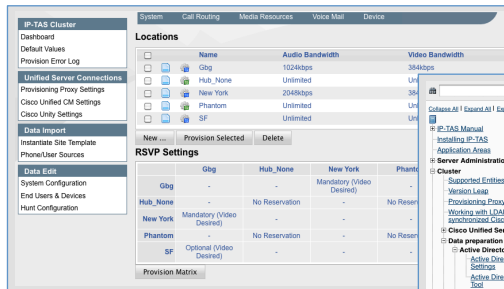


Datasheet

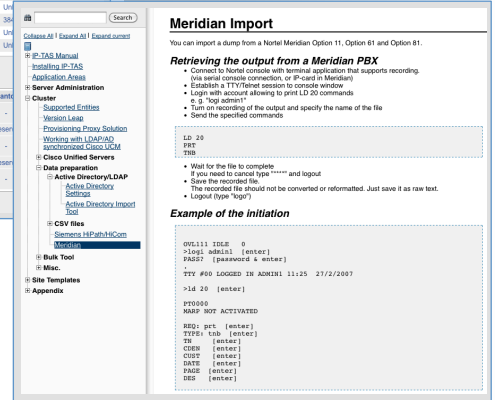
Screenshot examples



Dashboard of a Cluster



System configuration (Location example)



On-line Help (Meridian example)

Description	MAC Address	Phone Model	Device Protocol	Phone Button Template	Security Profile	Softkey Template	Presence Group
1 IPTAS	00192F4E4F4D	Cisco 7941	SCCP	Standard 7941 SCCP	Cisco 7941 - Standard	Standard Feature	Standard Pres...
2 Jens Lantz	0019552C81C2	Cisco 7941	SCCP	Standard 7941 SCCP	Cisco 7941 - Standard	Standard User	Standard Pres...
3 Leo Palmberg	00192F4E503F	Cisco 7941	SCCP	Standard 7941 SCCP	Cisco 7941 - Standard	Standard Manager	Standard Pres...
4 Conference 2	000DE1D7DB	Cisco 7960	SCCP	Standard 7960 SCCP	Cisco 7960 - Standard	Standard User	Standard Pres...
5 Magnus Gustafson	00192F4E510A	Cisco 7941	SCCP	Standard 7941 SCCP	Cisco 7941 - Standard	Standard Manager	Standard Pres...
6 Par Mattsson	0015637A4EAA	Cisco 7940	SCCP	Gbg 7940 SCCP	Cisco 7940 - Standard	Standard User	Standard Pres...
7 Jens JPC	9786A46F3	Cisco IP Communicator	SCCP	Standard CPC SCCP	Cisco IP Communicator	Standard User	Standard Pres...
8 Conference 1	0026C8B9380	Cisco 7975	SCCP	Standard 7975 SCCP	Cisco 7975 - Standard	Standard Manager	Standard Pres...
9 Gbg LAB	00192F4E4F68	Cisco 7941	SCCP	Standard 7941 SCCP	Cisco 7941 - Standard	Standard Protected Phone	Standard Pres...

Bulk tool for adding, updating, deleting and provisioning. Also includes wizards to simplify

IP-TAS is easy to install and you can start configuring clusters immediately. Create accounts with privileges to suit the project groups. Invite clients, PM's, engineers to contribute within each area of responsibility whenever convenient. IP-TAS is accessed via standard WEB browser and multiple users may work in the same cluster simultaneously.

IP-TAS is especially designed for Managed Service Providers, Hosted Service Providers and System Integrators.

Platforms and Requirements, IP-TAS server

Operating Systems and Platforms:

- Sun Solaris 10
 - o Sun UltraSPARC (minimum 1 processor at 1.4GHz)
 - o Intel and AMD 32 and 64 bits processors
- SUSE Linux Enterprise Server 10
 - o Intel and AMD 32 and 64 bits processors
- Red Hat Enterprise Linux 5 server
 - o Intel and AMD 32 and 64 bits processors

Databases Supported:

- PostgreSQL 8.4

Java requirement:

- Java JDK 6

System Requirements:

- Dual core 2.6GHz (minimum)
- Memory: 3 GB (minimum)
- Disk Space: 2 GB (minimum)

Network requirement (IP-TAS server - CUCM):

- 1Mbps IP connection

Unified Servers Supported

- Cisco UCM
 - o 4.1, 4.2, 4.3, 5.1, 6.1, 7.0, 7.1, (8.1 sept 2010)
- Cisco Unity
 - o 4.2, 5.0, 7.x

Platforms and Requirements, IP-TAS Client

Operating Systems and Browser:

- Any OS compatible with Java and browser requirements
- Microsoft Internet Explorer 7.0 or later
- Mozilla Firefox 3.0.5 or later

Java requirement:

- Java 6 (JRE 1.60.11) or later
- Java browser plug-in installed

System Requirements:

- 2.3GHz (recommended)
- Memory: 2 GB (recommended)

Network connection (IP-TAS client - Server):

- 2Mbps IP connection (recommended)



IP-TAS 2.6 has tested compatible with CUCM 5.1, 6.1 and Unity 5. Go to www.cisco.com/go/compatibledisclaimer for complete disclaimer.

Need more information?

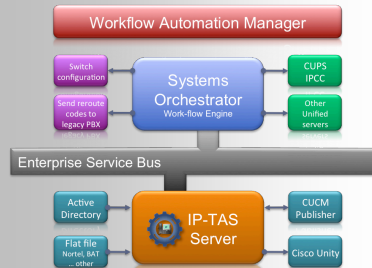
Go to

www.visionael.com

IP-TAS/SO topology

A platform independent, future proof design to optimize performance and user experience. Development cycles are extremely efficient and new features are added continuously.

All Visionael products uses SOA Enterprise Service Bus for API/SPI integration



Please visit our web site to find updates/enhancements in other datasheets or videos.