

Visionael® Network Resource Manager

What is New in NRM 8.0

Enhancements to Visionael's Services Automation Suite Add Significant Functionality and Advance Ease of Use

NRM 8.0 provides the foundation for Network Transformation; Introducing Premium Web Client

New features in Network Resource Manager (NRM) 8.0 provide the foundation for true network transformation:

- Enhancements to Network Discovery
- New Premium Web Client
- VLANs
- Mass Cabling Changes
- Better organized diagrams for printing
- And more...

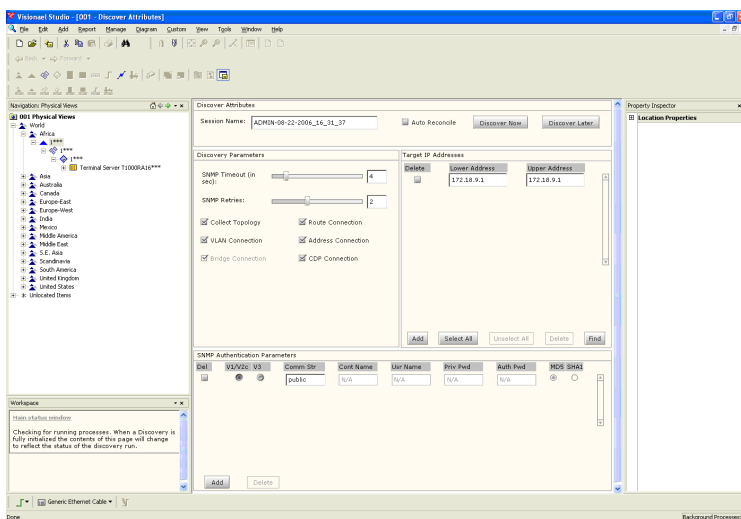
We listen to what our enterprise, government, and Communication Service Provider customers tell us about both their existing requirements and anticipated needs. This allows Visionael to deliver the most complete foundation for managing the design and deployment of IP Networks on the market today.

To this end, we're introducing a new licensed product with enhanced capabilities to view and modify network designs over the web. And we're calling it the Premium Web Client.

Discover to Designs

In addition to reconciling discovery runs against the As-Built design, our Network Resource Manager can now, thanks to new integrated discovery interfaces, launch discoveries from within a design. This allows all discovered elements to be reconciled to the design from which the discovery was initiated.

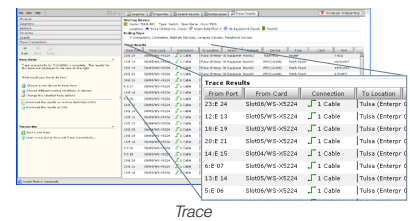
Perfect for "truing up" deployments and verifying design specifications are met.



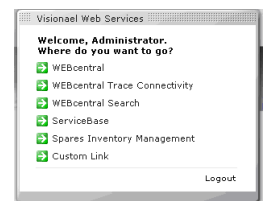
Now Launching a Discovery from Studio Reconciles Discovered Elements Against the Open Design

Premium Web Client

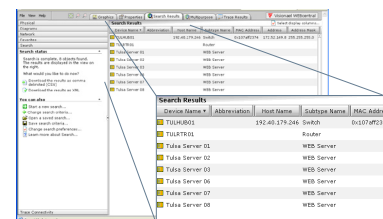
Visionael's most recent add-on module extends NRM's functionality throughout the organization. Tabular Trace Connectivity, Global Query, user-based logon controls, and an extensible write-access adapter allow field technicians to interact with the Visionael system and ensure real time inventory updating.



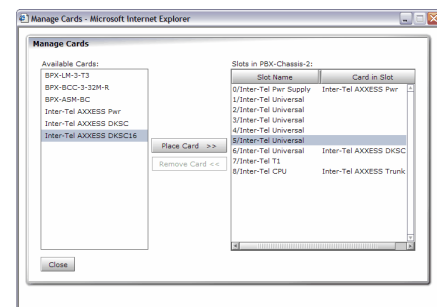
Trace



Web Services Logon



Global Query



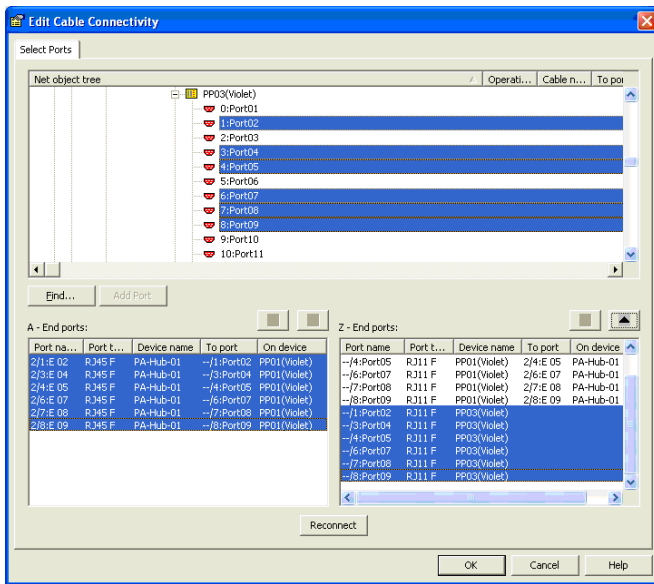
Write Adapter (Example): Used here to create a Manage-Cards Web interface.

Visionael® Network Resource Manager

What is New in NRM 8.0

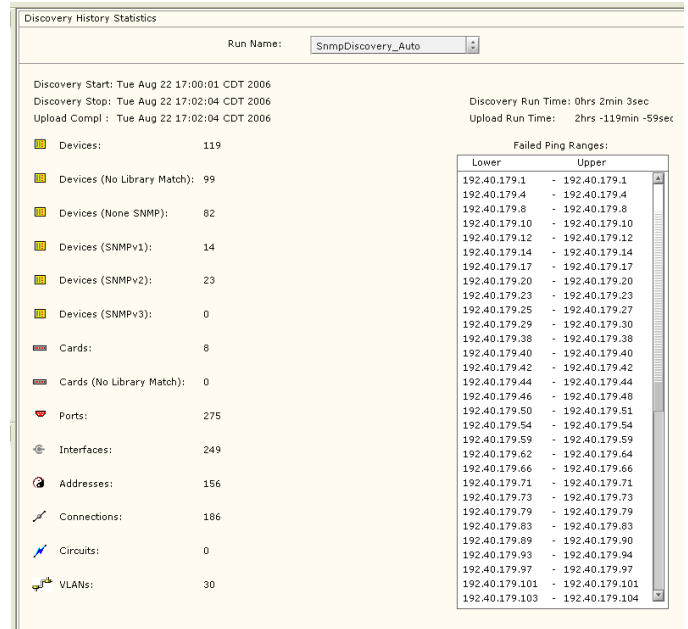
Mass Cabling Changes

Re-cabling a device en masse is now as simple as multi-selecting the ports and hitting, "reconnect."



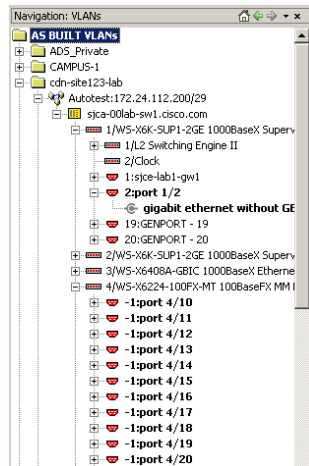
Discovery Reporting

Run-reports are now available for Discovery jobs.



VLANs

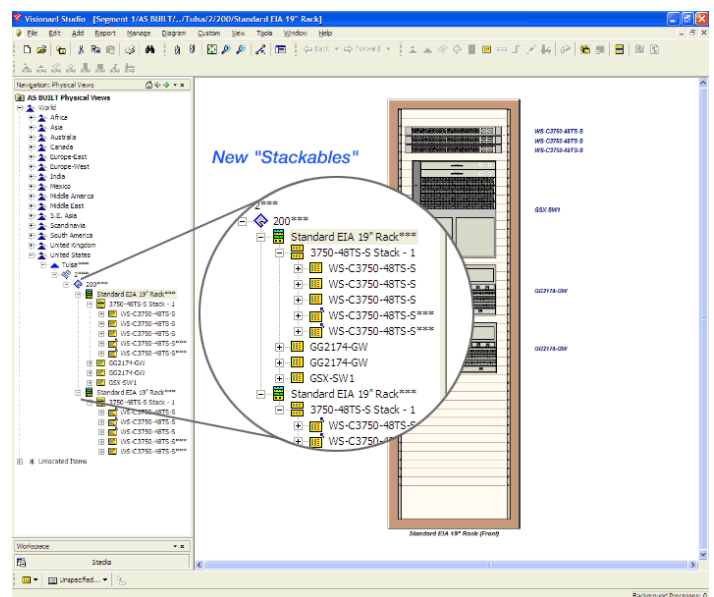
VLANs (Virtual Local Area Networks) can be discovered and then viewed within the Visionael Studio client. After a discovery is run and reconciled using Visionael's Network Audit functionality, VLAN information appears in the VLAN navigation pane and in device/port properties. VLAN membership can also be viewed graphically, and that graphic can be saved as a Visionael diagram.



The VLAN navigation pane shows, hierarchically, VLAN domains, VLANs, member devices, cards, ports, and participating logical interfaces. VLAN properties such as VLAN name and number can be viewed in the VLAN properties sheet. Devices belonging to one or more VLANs display this information in the VLAN tab of the device's property sheet.

Stackables

Users can now create and manage device stacks, "stackables," in Visionael Studio.



Visionael® Network Resource Manager

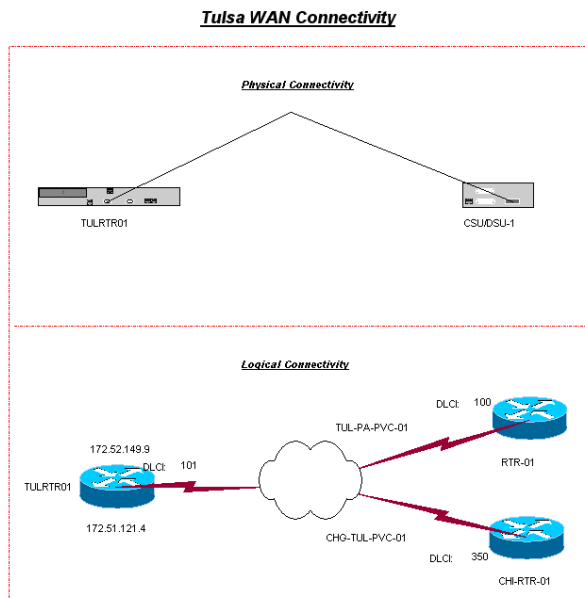
What is New in NRM 8.0

Diagramming Ease-of-Use Improvements

(Multiple Connections, Text Anchoring During Alignment, Out of View Object Selection, Diagram Folder Deletion, Undo)

Multiple Connections

NRM Diagrams now allow redundancy when showing connections. This enables diagrams to, for instance, show both logical and physical connectivity:



Text Anchoring

When using the Arrange function, NRM can now anchor text rather than treating it as an object to be arranged.

Out of View Object Selection

Objects out of view are now secure and can no longer be selected and moved unintentionally.

Diagram Folder Deletion

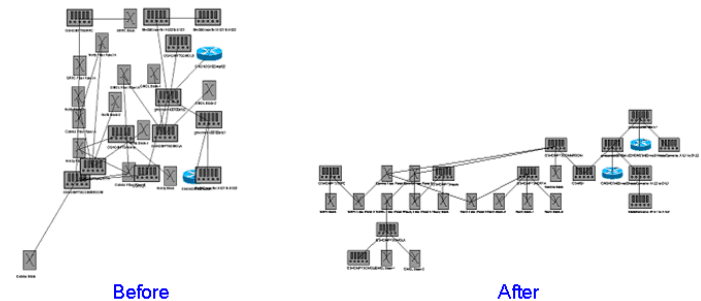
Empty diagram folders can be deleted.

Undo

Up to 10 operations can be undone by using either the CTRL+Alt+“Z” shortcut, or “undo” from the top menu.

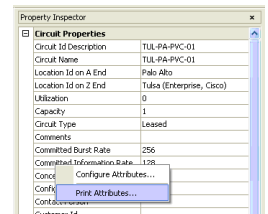
Topology Layout Algorithms

In diagrams or trace-connectivity, objects are laid out with new placement algorithms for a variety of topology types. Radial, Circular, Hierarchical, and Undirected are supported. All objects, or only selected ones, can be laid out using this new feature.



Printing from the Property Inspector

Quickly printing device or circuit properties is as easy as a right click in the property inspector:



MSI Installer

The Visionael installer is now in Microsoft format.

Device Aging

We've added a new GUI in the Discovery Interface to manage devices discovered in one run and not in subsequent runs.

Conclusion

Visionael has added powerful new features to NRM 8.0, adding significant functionality for IP network transformation. These features complement the Visionael Services Automation Suite for enterprise customers, government agencies, and communication service providers.

For more information, go to www.visionael.com.

US Headquarters:

201 San Antonio Circle, Suite 235
Mountain View, CA 94040
USA
Phone +1.650.963.0960
Fax +1.650.941.4456