

Visionael® Discovery Management Server

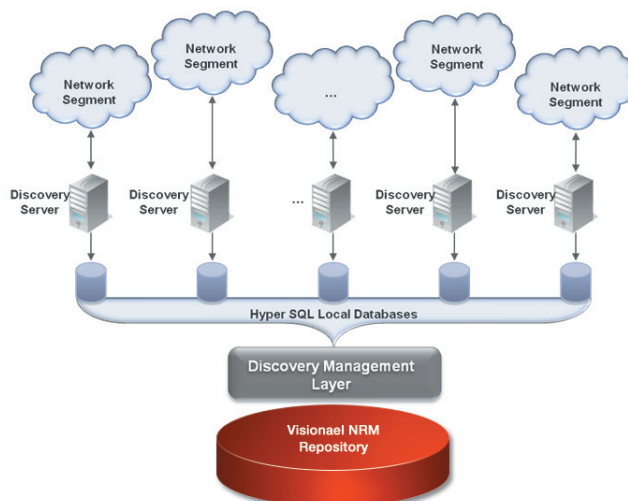
The constant flux of information in large scale networks has proven to be one of the most significant challenges to service providers, managed communications providers, and global enterprises. Changes are often unplanned and managing large volumes of geographically dispersed data requires frequent, timely collection and reconciliation. Provider networks are intended to generate revenue as quickly as possible while global enterprise networks are operationally mission critical, but both share typically short maintenance windows that make traditional discovery methods problematic.

Vast networks require a rapid discovery and reconciliation of data. The Discovery Management Server (DMS) enables organizations to use Visionael's Discovery and Reconciliation Management (DRM) solution as the **single source of network truth**, creating a “real time” repository for network information. This solution enables a revolutionary offering — a highly scalable, three-tier discovery architecture.

Monitoring and understanding network design changes and the constantly evolving interdependent composition of network resources requires quick and deep discovery, rapid reconciliation, and timely reporting.

Featuring a robust discovery architecture, Visionael DMS enables IT professionals to automatically use SNMP-based discovery in a distributed manner, without having to script the retrieval and reconciliation process.

No other system creates a “real time” repository for network information on this scale. And no other system offers such a ground-breaking, highly-scalable, 3-tier discovery architecture to provide a timely and easily managed, single-source of network truth. Combined with an integrated reconciliation process, Visionael Discovery Management Server saves time and effort during both the discovery and reconciliation processes in highly distributed networks.



The Visionael Discovery Management Server creates a “real time” repository for network information in large scale networks, saving time and effort during both the discovery and reconciliation processes

Visionael Discovery Management Server enables organizations to use Visionael's Discovery and Reconciliation Management solution in large scale, highly distributed networks as a **single** source of “network truth.”

Visionael Service Automation Suite

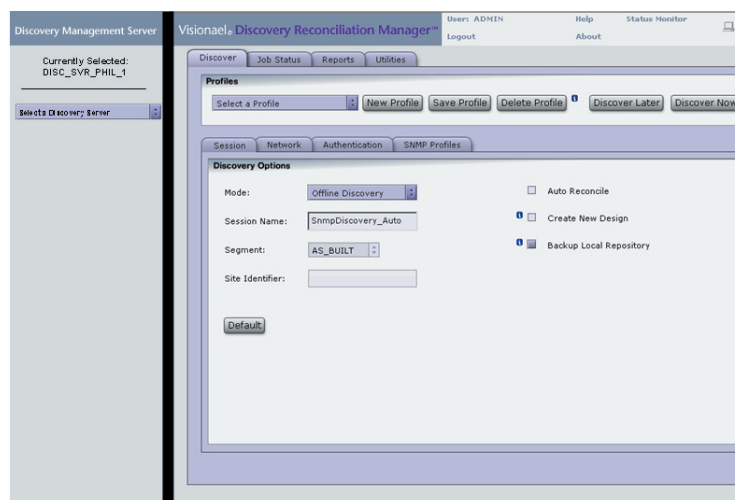
The Visionael Service Automation Suite provides one-stop fulfillment for Next-Gen Services.

The Visionael Discovery Management Server is an available module for the Visionael Discovery and Reconciliation Management (DRM) solution. All are part of the Visionael Service Automation Suite.

Visionael® Discovery Management Server

Visionael Discovery Management Server Delivers New Capabilities, Improving Network Management

- Easily identify desired subnets to be managed within a customer network
- Upload subnets as identified discovery targets
- Discover the network and certify any managed devices that fail normal collection
- Populate the Visionael NRM repository with certified discovered data
- Logically associate each Distributed Discovery Server (DDS) with specific network locations or subnet ranges to allow “Market Based Discovery” when a “Discover to Design” is initiated; Discovery Management Server (DMS) routes work to appropriate DDS only
- Schedule times for running full discovery sweeps
 - DMS queries the Visionael database to identify all IP’s to be discovered. These can be isolated to all IP’s stored, or just SNMP managed IP’s
 - DMS excludes all interfaces identified from NRM, preventing the duplication of discovered devices from multiple DDS servers
 - DMS automatically distributes the discovery based on known DDS server members and “market/area” assigned rules
- Email notification of Discovery Server issues
- Automatic submission of discovery results to the main DMS server after DDS server discovery runs to process exceptions and load NRM data
- A new “As-Built” database view each day to support discovery exception updates; exception reporting is based on the differences between today’s and yesterday’s discovery design
- DMS receives and executes Discover requests submitted by Visionael Studio users
- Reports are provided under the EDGE server platform and identify:
 - New devices discovered
 - All changes from all Levels
 - Discovery history for all DDS servers
 - Failed PINGs for all DDS servers
 - Unmanaged IP’s for all DDS servers—including FQDN
 - Missing Devices



New Discovery Management Server Portal provides access to distributed discovery servers

Discovery Management Server Features

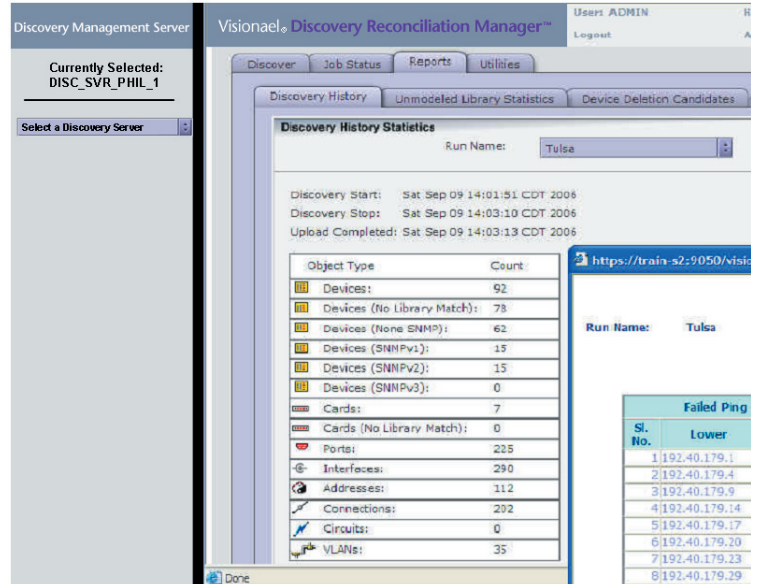
- Configuration file updates: all DDS server updates can be pushed from the DMS server
- Host File management: uploading and deleting of host files to distributed servers
- Web Services: fully WS2 compliant API for external NMS/EMS can spawn Discovery runs from events such as SNMP traps and log file additions
- Auto Discovery profile generation: provides operators the ability to create discovery profiles across the network, removing additional set up processes
- Scheduling and managing discovery runs: flexible scheduling accommodates all servers or selected groups of servers
- Auto exception analysis and data loading
- Error handling and notification: email alerts for failed discovery jobs or issues with data-loading
- Enhanced filtering: filtering of data within the reconciliation process
- Local repository client middle-tier analysis: analysis of the DDS servers to filter data before it is sent to the DMS
- Subnet flat file loading
- Data filtering: exceptions to current network configurations (modifications) and new additions highlighted

Visionael® Discovery Management Server

- Enhanced device swap/modification support
 - Daily discovery run capability
 - Streamlined inventory database management and maintenance
 - “Real time” inventory, featuring appropriate flagging and clean reconciliation, makes the Visionael Network Repository the “database of record”
- Server Health Dashboard: at-a-glance view of all discovery servers under management. A server will appear “unhealthy” if:
 - Discovery Management Server cannot communicate (firewall testing tool included)
 - A discovery job encounters an error
 - Data upload to the RDBMS fails
 - Data movement from the remote site to the DMS fails
- Unique Device Identifier: provides more efficient data uploading from distributed servers
- Market based discovery: logical association of each discovery server with specific network locations or subnet ranges
- Differential reconciliation: provides significant performance improvements during reconciliation. Only differences to the main NRM repository are processed

DMS Reporting

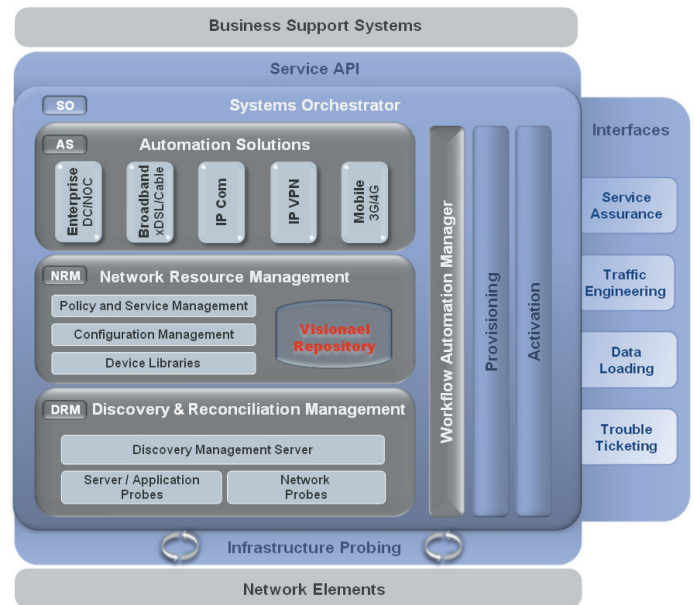
- Standard reports based on aggregated data from across the discovery network
 - Discovery History
 - Failed PING
 - Unmanaged IP
 - Missing Devices
- EDGE (Engineering Documentation Generation Engine) Reporting, which out-of-the-box provides:
 - New, adds, changes, and deletes report
 - New devices report, initiated either from the MAP level or from a LOC level
 - Fully supported and upgradeable
 - Customization offering a wide range of special report views



New Discovery Management Server Portal provides built-in reporting capabilities

Visionael Service Automation Suite

Visionael Discovery Management Server is an optional module of the Visionael Discovery and Reconciliation Management (DRM) solution, which is part of the overall Visionael Service Automation Suite.



Visionael Service Automation Suite simplifies Next Generation service deployment and management



Visionael® Discovery Management Server

System Requirements

DMS architecture requires:

- NRM version 8.0 or higher and Repository
- DRM
- DMS license option for DRM

NRM and Repository Requirements (minimum requirements):

RDBMS:

Oracle 9i rel 2 and 10g Enterprise and Standard Edition
Microsoft SQL Server 2000 SP3a or higher

RDBMS OS:

Solaris 9 and 10 with the most recent Java and OS patches
Windows 2000 Server and Advanced Server
Windows Server 2003
HPUX 11i v2 (PA-RISC)

APPL SERVER OS:

Solaris 9 and 10 with most recent Java and OS patches
Windows 2000 Server and Advanced Server
Windows Server 2003
HPUX 11i v2 (PA-RISC)

CLIENT OS:

Windows 2000
Windows XP Professional

WEB BROWSER:

Microsoft IE 6.0 or higher

WEB REPORTS SERVER:

Microsoft IIS 5.0 or higher (on Windows 2000 and 2003)
Crystal Reports XI Developer and Server Edition
Crystal Reports 10 Developer and Advanced Developer Edition

Visionael Corporation provides best-of-breed software and services that allow telecommunications service providers, network outsourcers, enterprises and government organizations to automate the rollout of network services over IP networks and to accelerate time-to-revenue and productivity. With Visionael software, network operators can more quickly design, provision and activate next-generation services—including voice, data, mobile and video offerings—all while reducing the complexities of managing large, advanced networks.

US Headquarters:

201 San Antonio Circle, Suite 235
Mountain View, CA 94040
USA
Phone +1.650.963.0960
Fax +1.650.941.4456

Web Site: www.visionael.com
E-mail: info@visionael.com